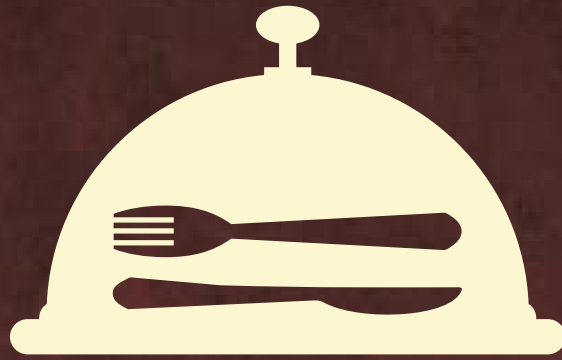




413 Pitt St, Haymarket, NSW, 2000  
9211 1194, 9211 1196



# MENU

---

## ROOM SERVICE

Available for room delivery orders  
between 11.30am and 10pm

Please Note: Minimum order of \$20 applies

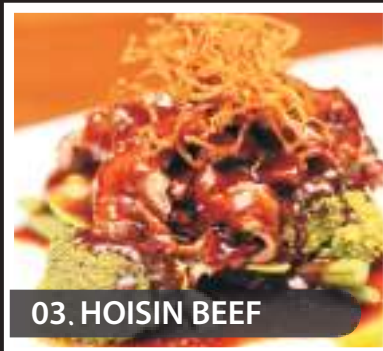
- Dial "3" to order from your room
- Delivery included in price
- Meals served in takeaway container
- Order can be charged to room account

# CHEF SPECIAL

- 01. PED NAM BUOY (DUCK) \$ 26.90  
Roasted Duck served with stir fried shitake mushroom
- 02. PLA OB MOR DIN (FISH) \$ 17.90  
Fish fillet with black pepper
- 03. HOISIN BEEF (BEEF) \$ 22.90  
Beef stir fried in hoisin sauce



02. PLA OB MOR DIN



03. HOISIN BEEF

# ENTREE

- 04. CRAZY WINGS (CHICKEN) \$10.90  
Deep fried Chicken Wingettes cut into pieces
- 05. KIEW KAI TOD (2pc) \$7.00  
Deep fried wontons filled with quail eggs served with chilli sauce
- 06. TAO HOO TOD (6pc) \$8.90  
Deep fried Tofu served with chilli sauce
- 07. PRAWN CAKE (4pc) \$10.90  
Deep fried marinated minced prawn in Thai herbs & white pepper, served with plum sauce
- 08. FISH CAKE (4pc) \$9.90  
Deep fried marinated minced FISH in Thai herbs, served with sweet chilli sauce
- 09. CHICKEN SATAY (7pc) \$10.90  
Grilled chicken skewer served with peanut sauce & toasted bread



07. PRAWN CAKE



08. FISH CAKE



01. PED NAM BUOY



04. CRAZY WINGS



05. KIEW KAI TOD



06. TAO HOO TOD



09. CHICKEN SATAY



## STIR FRIED

Choice of :	Vegetables / Tofu	\$14.90
	Chicken / Beef / Pork	\$15.90
	Seafood	\$17.90

### Choice of sauce :

- 10. Chilli Basil
- 11. Oyster Sauce
- 12. Cashew Nut/ Chilli Jam
- 13. Garlic & Pepper
- 14. Fried Rice

## Special Stir Fried

- 15. Khao Pad Poo \$15.90  
Fried rice with Crab Meat
- 16. Khao Pad Sub Pa Rod \$22.90  
Pineapple fried rice served in whole pineapple
- 17. Ka Na Moo Krob \$15.90  
Crispy pork belly stir fried with Chinese broccoli & fresh chili



13. GARLIC & PEPPER SEAFOOD



17. KA NA MOO KROB

## NOODLE

Choice of :	Vegetables / Tofu	\$14.90
	Chicken / Beef / Pork	\$15.90
	Seafood	\$17.90

### Choice of sauce :

- 18. Pad See Ew  
Stir fried flat rice noodle with sweet soy sauce
- 19. Pad Thai  
Stir fried thin rice noodle with pad thai sauce & dry shrimp
- 20. Pad Kee Mao  
Stir fried flat rice noodle with chilli basil sauce
- 21. Pad Med Ma Muang  
Stir fried flat rice noodle with cashew nuts & chilli jam
- 22. Rad Na  
Stir fried flat rice noodle in gravy sauce
- 23. Hokkien Noodle  
Stir fried Hokkien noodle in oyster sauce



18. PAD SEE EW TOFU

## Side Dish

24. Steam rice	\$3.00
25. Sticky rice	\$3.00
26. Omelette	\$6.00
27. Fried egg	\$3.00



19. PAD THAI SEAFOOD

## DRINKS

28. Thai black ice tea \$ 4.90  
 29. Thai lemon ice tea \$ 4.90  
 30. Thai milk tea \$ 4.90  
 31. Watermelon blend \$ 4.90  
 32. Lychee & Mint blend \$ 4.90  
 33. Whole Coconut \$ 4.90  
 34. SOFT DRINK \$ 2.50  
 (Coke, Diet Coke,  
 Lemonade, Fanta Orange)

### Red Wine

41. Gum Creek Estate Cabernet Merlot \$20/btl  
 South Eastern Australia  
 A perfect blend of two Australia's best varieties. This full bodied wine explodes with red berry fruit & spice.

42. STAR BAY Shiraz WA \$28/btl  
 Medium brick red hues. This wine offers intense confectionary, raspberry conserve, blueberry with savoury earthy spice mix. Sweet upfront fruit provides softness & generous palate weight with maturation in new French Oak providing vanillin spice complexity & texture.

43. FOX CREEK McLaren Vale Cabernet Sauvignon \$28/btl  
 The nose has a classic varietal leafy lift with hints of smoky toast, cigar box underpinned by a rich earthiness, black cardomon & smoked meats. Blackcurrant & raspberry fruit lead into a mid palate of roasted nuts & dark chocolate. The soft textural tannin enhances the wines richness & length giving a soft juicy but structured finish that matches fabulously with food.

44. JJ HAHN Stelzer Road Merlot \$28/btl  
 The Merlot is a rich deep purple colour, indicative of the variety. The nose displays welcoming hints of stewed plums, perfumed violets, cinnamon & cassis. Further investigation is rewarded with a smooth mouth-filling juice of blackcurrants, sweet spice, nutmeg & cassis. The palate is ripe with sweet concentrated fruit & soft velvety tannins. The varietal stewed plums & blackcurrant fill the mouth evenly, with hints of spice such as clove & cinnamon, adding interest & complexity.

45. WHITEHAVEN Marlborough Pinot Noir \$35/btl  
 A medium bodied wine with supple tannins & a fleshy, silky texture. The fruit & savoury, game flavours are perfectly balanced & persist on the long, clean acid finish.

### BEER

35. SINGHA \$7.50/BTL  
 36. CHANG \$7.50/BTL  
 37. LEO \$7.50/BTL  
 38. HEINEKEN \$8.00/BTL  
 39. CORONA \$8.00/BTL  
 40. HAHN Premium light \$7.50/BTL

### White Wine

46. Gum Creek Estate Sem Sauv Blanc \$20/btl  
 South Eastern Australia  
 A perfect blend of two classic varieties. It exhibits a medium straw green colour with a citrus & melon palate. Ideal wine with seaFood or spicy Asian dishes

47. STAR BAY Chardonnay WA \$28/btl  
 Pale straw. Vibrant, uplifted & attractive nose with lovely purity & primary fruit. Fresh tropical stone fruit, pineapple, citron tart, orange zest & green apple combine with subtle French oak influence providing toasty layers & complexity.

48. STAR BAY New Zealand Marlborough Sauvignon Blanc \$28/btl  
 The classic Marlborough Sauvignon Blanc is very intensely aromatic & lively, bursting with flavours of passionfruit, melon, gooseberry & citrus.

49. LISA MCGUIGAN Pinot Grigio Silver Range \$30/btl  
 The Pinot Grigio fruit was sourced from cool climate Victoria, the perfect part of Australia for growing this variety. The wine is fresh with citrus characters & is delicious with everything.

50. DOMAIN BAROSSA Ruth Miller Riesling \$28/btl  
 This wine has flavours & aromas of lime & perfume. This is a wine with a long clean finish that can be enjoyed anytime." Perfectly matched with Roasted chicken or duck.

New South Wales: Liquor Act 2007.

It is against the law to sell or supply alcohol to, or to obtain alcohol on behalf of, a person under the age of 18 years.